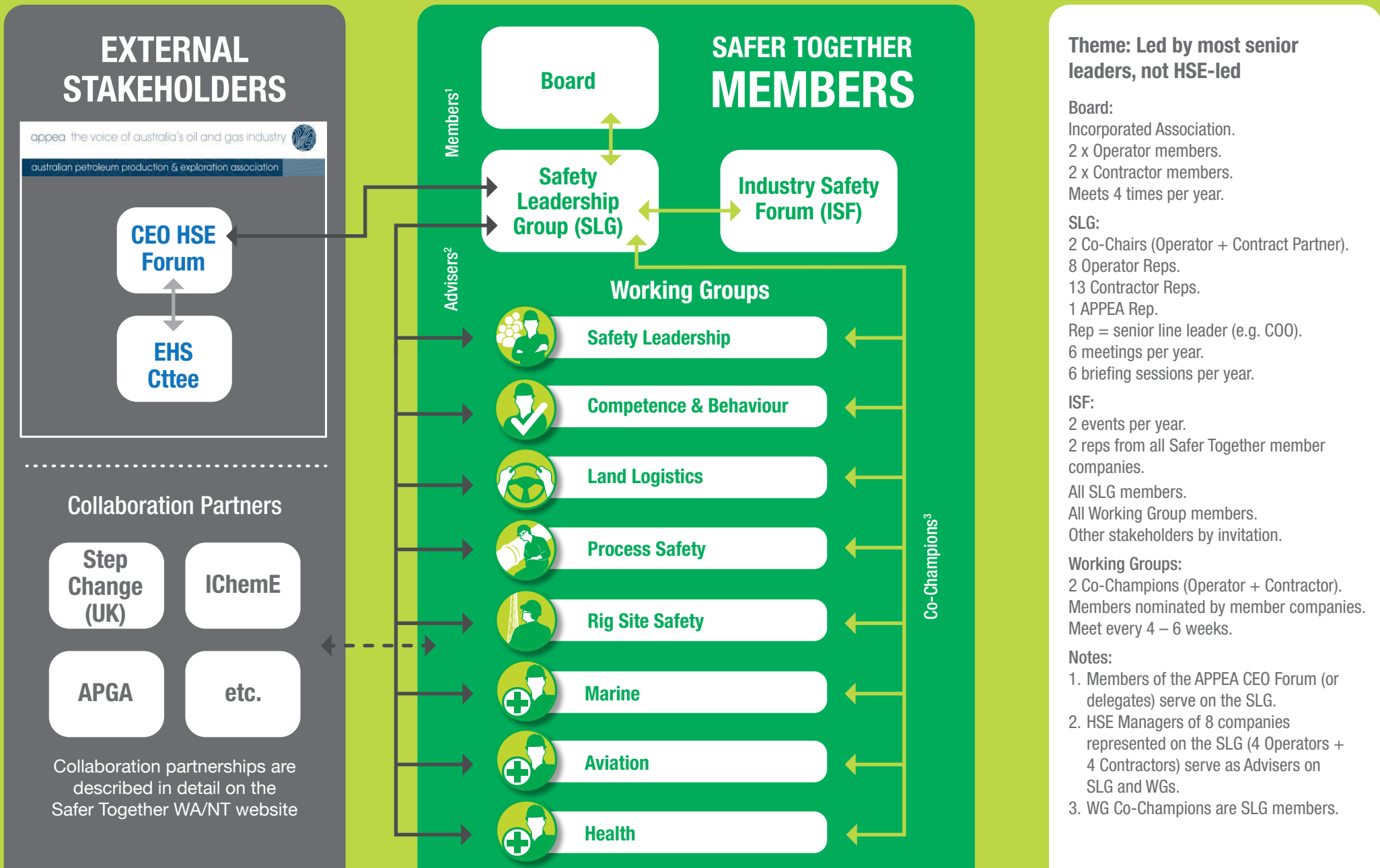


Operating Model – WA/NT



Theme: Led by most senior leaders, not HSE-led

Board:
 Incorporated Association.
 2 x Operator members.
 2 x Contractor members.
 Meets 4 times per year.

SLG:
 2 Co-Chairs (Operator + Contract Partner).
 8 Operator Reps.
 13 Contractor Reps.
 1 APPEA Rep.
 Rep = senior line leader (e.g. COO).
 6 meetings per year.
 6 briefing sessions per year.

ISF:
 2 events per year.
 2 reps from all Safer Together member companies.
 All SLG members.
 All Working Group members.
 Other stakeholders by invitation.

Working Groups:
 2 Co-Champions (Operator + Contractor).
 Members nominated by member companies.
 Meet every 4 – 6 weeks.

Notes:

- Members of the APPEA CEO Forum (or delegates) serve on the SLG.
- HSE Managers of 8 companies represented on the SLG (4 Operators + 4 Contractors) serve as Advisers on SLG and WGs.
- WG Co-Champions are SLG members.