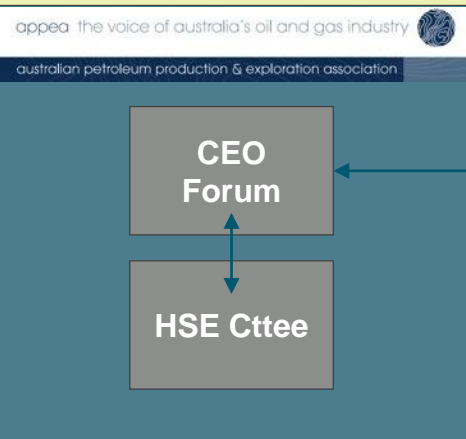
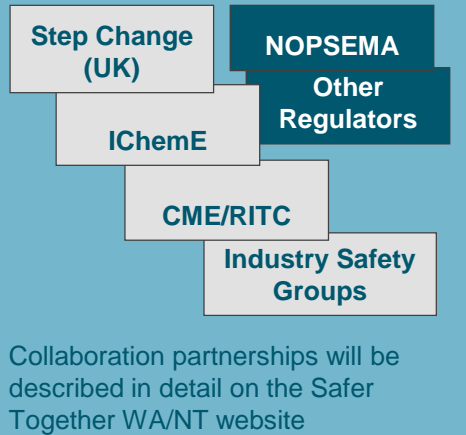


# Safer Together WA/NT Operating Model

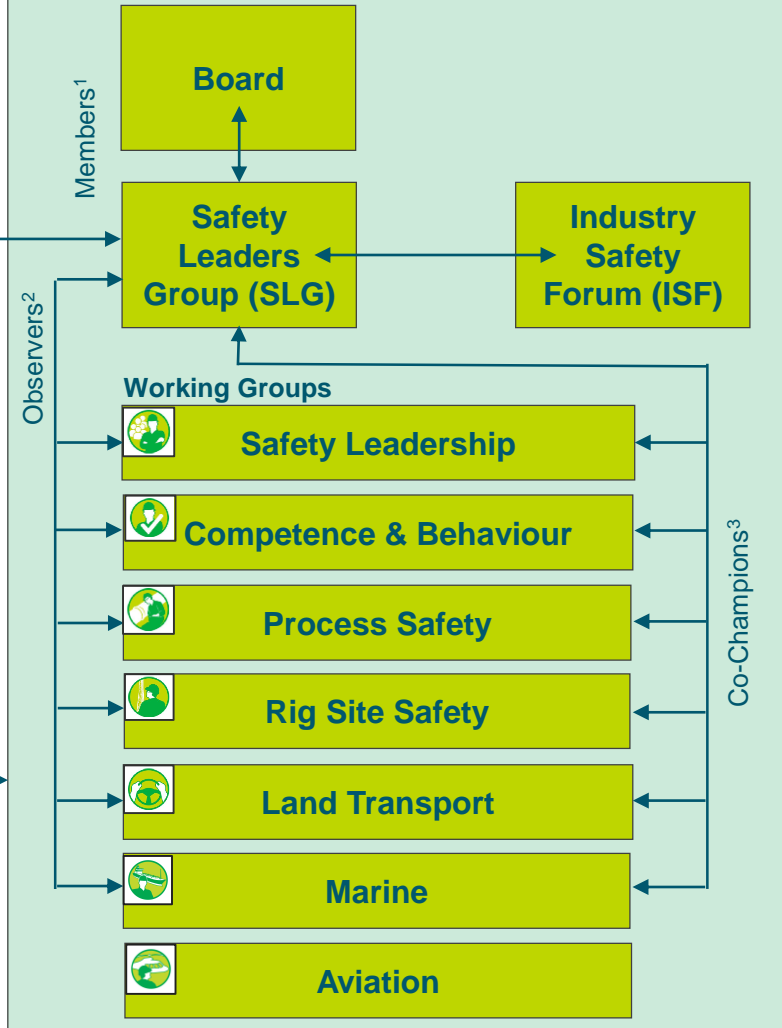
## External Stakeholders



## Collaboration Partners



## Members



*Theme: Led by most senior leaders, not HSE-led*

### Board:

Incorporated Association  
2 x Operator members  
2 x Contractor members  
Meets 4 times per year

### SLG:

2 Co-Chairs (Operator + Contract Partner)  
8 Operator Reps  
13 Contractor Reps  
1 APPEA Rep  
Rep = senior line leader (e.g. COO)  
6 meetings per year  
6 briefing sessions per year

### ISF:

2 events per year  
2 reps from all Safer Together member companies  
All SLG members  
All Working Group members  
Other stakeholders by invitation

### Working Groups:

2 Co-Champions (Operator + Contractor)  
Members nominated by member companies  
Meet monthly

### Notes:

1. Members of the APPEA CEO Forum (or delegates) serve on the SLG
2. HSE Managers of 8 companies represented on the SLG (4 Operators + 4 Contractors) serve as Observers on SLG and WGs
3. WG Co-Champions are SLG members